

# Sudan Dyes

## Colouring in Food

“Specialist Laboratory Services”

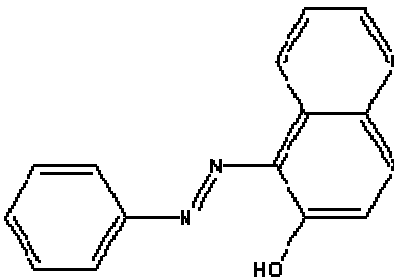
Sudan dyes are red dyes that are used for colouring solvents, oils, waxes, petrol, and shoe and floor polishes. They have also been discovered in some imported chilli powder from India and most recently finding their way into relishes, chutneys and seasonings containing chilli powder. Sudan dyes are not permitted in food in the UK, EU and Australia and New Zealand due to concerns that the dyes may be carcinogenic in animals. There is limited evidence that exposure to products may be a health risk.



Leeder Consulting has a validated laboratory procedure which can assist importers, local producers, regulators and governments with detection of Sudan I, II, III, and IV. The Sudan dyes are analysed utilising Liquid Chromatography with a diode array detector. Confirmation is performed using Liquid Chromatography / Mass Spectrometry (LC/MS) Methods which provides high selectivity and sensitivity. The LC/MS allows for the detection of these contaminants at parts per billion levels in processed foods. This means that trace levels of Sudan dyes present due to adulterated ingredients can be detected.

The four Sudan dyes of concern in food are:

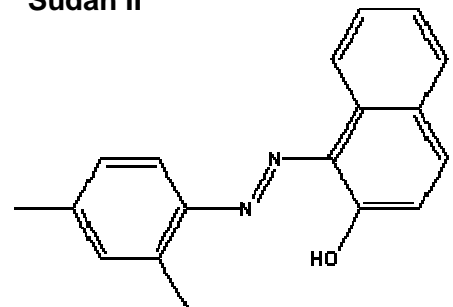
**Sudan I**



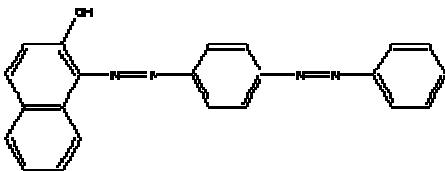
Leeder Consulting can also analyse for:

- **Sudan Orange G**
- **Orange II**
- **Para Red**
- **Rhodamine B**
- **4-(Dimethylamino)-Azo benzene.**

**Sudan II**

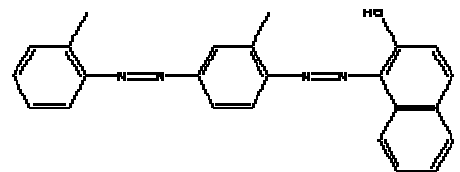


**Sudan III**



Quality Assurance and Quality Control are primary considerations when undertaking food analysis. Leeder Consulting is AS/NZS ISO 9001 Certified, the laboratory is NATA Accredited, a Registered Quarantine Laboratory and “Appointed Analyst” under the Commonwealth Imported Food Control Act.

**Sudan IV**



Leeder Consulting offer a range of specialised high-tech, non-routine and on-site services. Access to leading edge technology and expertise in Australia and overseas guarantees results when and where you require. To discuss your requirements or for more information call us now.



**LEEDER  
CONSULTING**